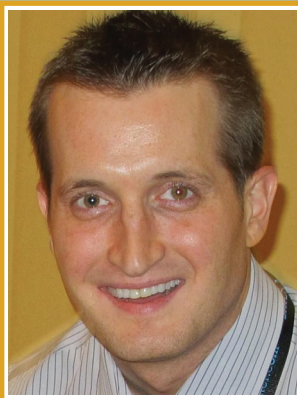




HOW ABT CAN HELP YOUR SCHOOL DISTRICT

Autism and Behavioral Technologies offers a broad range of services designed to help school districts meet the needs of students with autism and emotional disturbance, as well as the staff who support them.

I began my focus on autism and Applied Behavior Analysis (ABA) 13 years ago, and have since consulted in both school and home-based autism programs. Becoming a Board Certified Behavior Analyst (BCBA) and working for three years at the Region 4 Education Service Center have given me the opportunity to train and provide support to educators, administrators, and specialists from more than 60 school districts in Texas.



Edward Clouser, MA, MEd, BCBA | Owner

www.AutismBehavioralTech.com

VISIT OUR WEBSITE TO LEARN MORE ABOUT:

Professional development topics



On-site consultation options



Autism program evaluation components



Autism and behavior resources



AUTISM AND
BEHAVIORAL
TECHNOLOGIES

Professional Consulting and Support Services



AUTISM AND **B**EHAVIORAL
TECHNOLOGIES
professional consulting and support services

Autism and Behavioral Technologies, Inc.

8039 Ellinger Lane
Houston, TX 77040
Ph: 281-777-4635

www.AutismBehavioralTech.com

Consulting • Training • Resources

CAMPUS & STAFF SUPPORT

ABT can work directly with individual campus administrators and staff, providing on-site consulting and training in areas such as:

- Classroom design & scheduling
- Improving data collection methods
- Using effective instructional strategies, such as Discrete Trial Teaching (DTT)
- Developing effective reinforcement systems
- Improving student success in inclusive settings
- Social skills programming
- Improving student behavior

STUDENT SUPPORT

When your needs are student-specific, ABT can help. Services include:

- Conducting a detailed Functional Behavior Assessment (FBA)
- Developing an effective Behavior Intervention Plan (BIP)
- Reviewing and modifying behavioral interventions for individual students
- Assessing social skills
- Conducting evaluations for in-home, community-based, and parent training

STAFF TRAINING

These full or half-day trainings are customized to meet your staff development needs. Topics include:

Autism 101

Provides an overview of autism and a variety of evidence-based strategies to improve student performance

Effective Data Collection

Learn how to collect and analyze data on challenging behavior, academics, social skills, and communication

Improving Student Behavior

Learn to identify the function(s) of challenging behavior, select evidence-based interventions, and properly implement those interventions

Improving the Success of Students with Autism in Inclusive Settings

This workshop covers a variety of behavioral, instructional, and environmental strategies for both general and special education staff

Texas Autism Supplement

This workshop can focus on the eleven strategies as a whole or on individual strategies, such as in-home training

Research-Based Instructional Strategies

Learn techniques to improve student acquisition, maintenance, and generalization of academic and functional skills

AUTISM PROGRAM EVALUATION

High-quality programs for students with autism share common characteristics, or quality indicators, including an emphasis on skill acquisition, socialization, communication, the reduction of problem behavior, and adaptive skills. Additionally, staff experience and competencies play a pivotal role in the educational success of their students.

An evaluation of autism programming in your district can provide you with information and guidance to plan, improve, and administer programs for students with autism.

ABT can conduct an autism program evaluation that is customized to meet your district's specific needs. Some of the domain areas that can be included are:

- Classroom Environment
- Class Structure/Schedule
- Data Collection
- Instructional Methods
- Behavior Assessment
- Behavior Management
- Staff Competencies